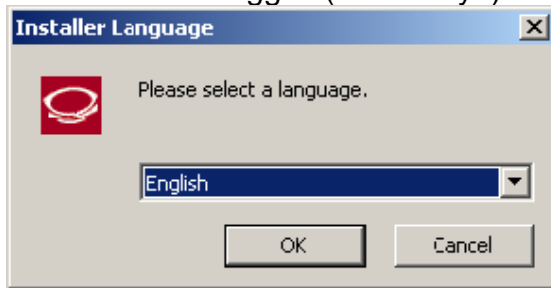




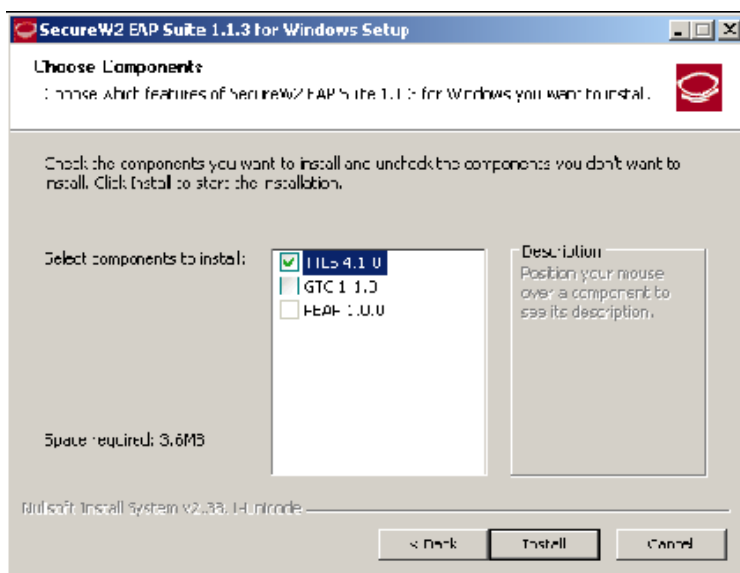
2. Pilih bahasa inggris (default nya) kemudian klik **OK**



3. Terbuka box SecureW2 EAP Suite 1.1.3 seperti ini kemudian klik **Next**, dan pilih **I Agree**



4. Pada box ini, ceklist component to install with **TLS 4.1.0** dan dilanjutkan klik **Install**



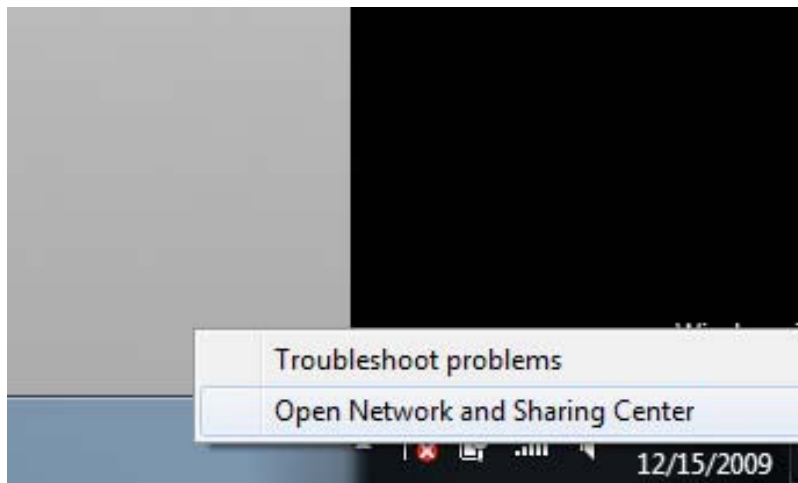
5. Box Secure W2 konfigurasi, isikan Username : <Username anda> , Password : <Password anda >



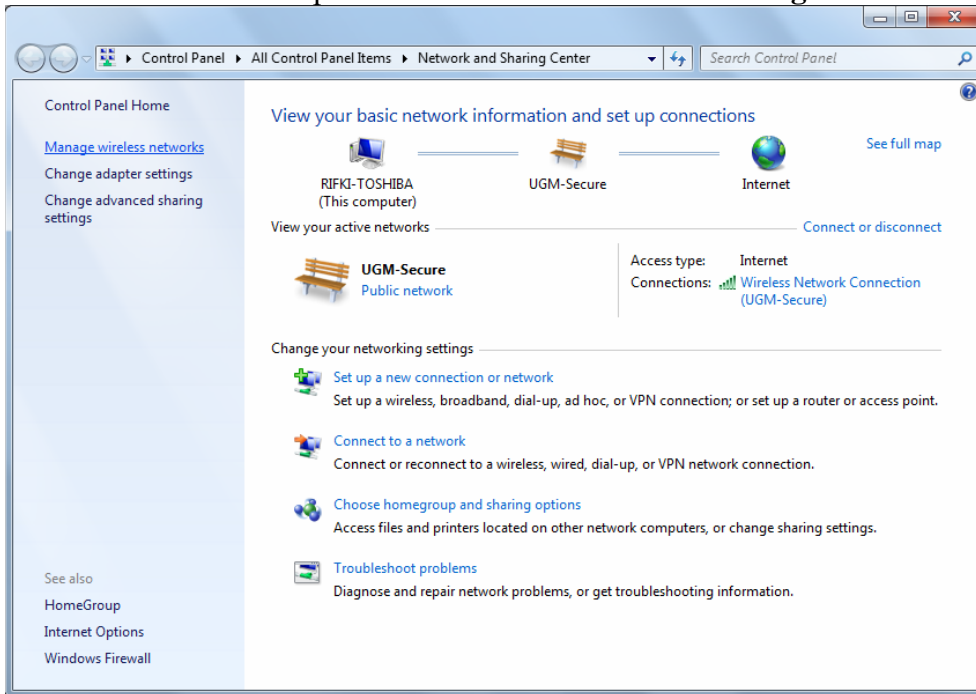
6. Klik Reboot now dan pilih Finish dan biarkan restart

### Konfigurasi SecureW2 on Network Card

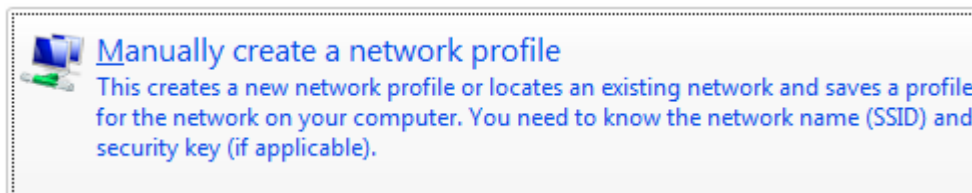
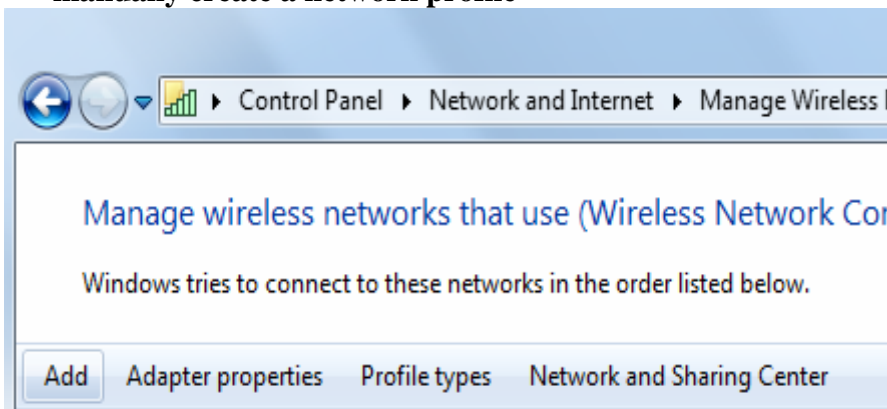
1. Klik kanan Network connection > pilih open Network and sharing Center



2. Box akan terbuka seperti dibawah ini kemudia klik **manage wireless network**



3. Setelah interface manage wireless network terbuka, maka klik **add** dan pilih **manually create a network profile**



4. Akan terbuka interface seperti ini, isilah sesuai kebutuhan dan standart peraturan kemudia pilih **next** > **Change connection setting** > **ok** > Pada tab **chose a network authentication method** pilih **secureW2 EAP-TTLS**

Manually connect to a wireless network

Enter information for the wireless network:

Network name: UGM-Secure

Security type: WPA2-Enterprise

Encryption type: AES

Security Key:   Hide characters

Start this connection automatically

Connect even if the network is not broadcasting

Warning: If you select this option, your computer's privacy might be at risk.

Next Cancel

Successfully added UGM-Secure

→ [Change connection settings](#)  
Open the connection properties so that I can change the settings.

UGM-Secure Wireless Network Properties

Connection Security

Security type: WPA2-Enterprise

Encryption type: AES

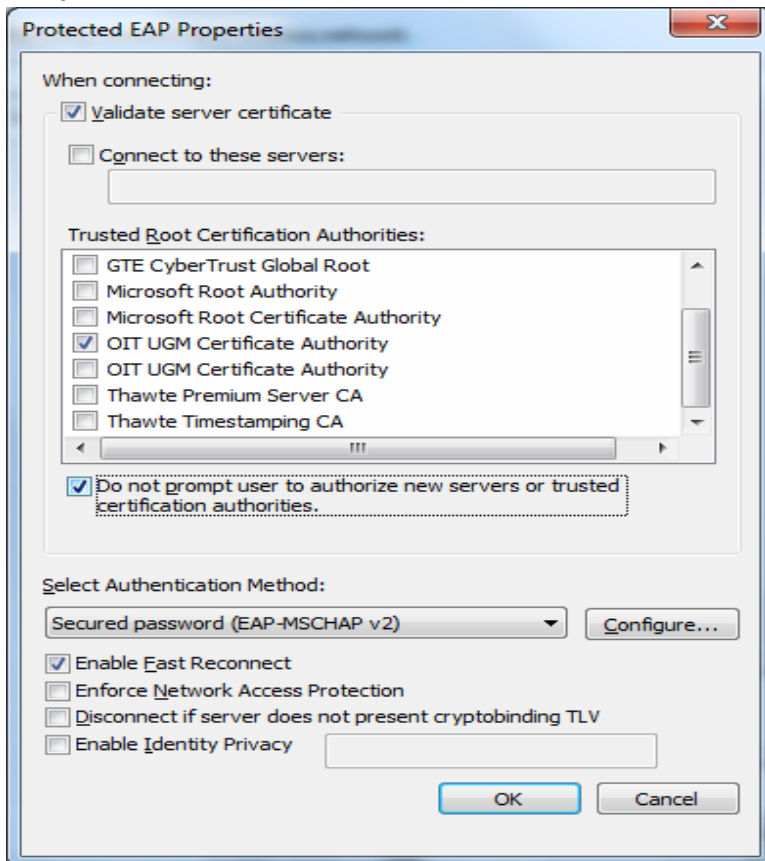
Chose a network authentication method:  
SecureW2: SecureW2 EAP-TTLS Settings

Remember my credentials for this connection each time I'm logged on

Advanced settings

OK Cancel

5. Klik tombol setting dan beri tanda check (✓) pada OIT UGM Certificate Authority dan Do not prompt user to authorize new servers trusted certification authorities > **ok**



6. Konfigurasi telah selesai, bisa klik tanda network kanan bawah dan coba connect ke UGM-Secure
7. Jika diminta install certificate maka Install dulu certificate nya > **Install All certificate** kemudian isilah username dan password > **Ok**

